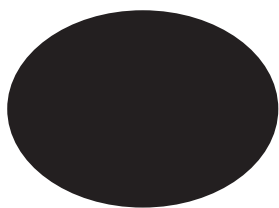
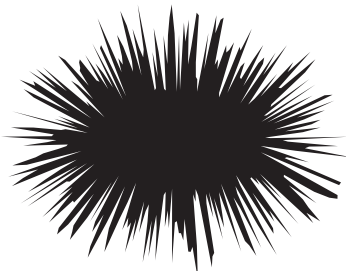


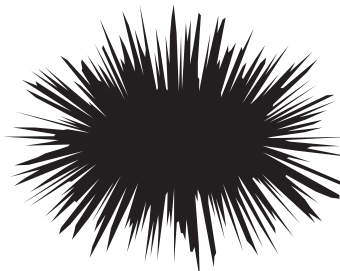
Mini-Skills: *Hair & Fur*



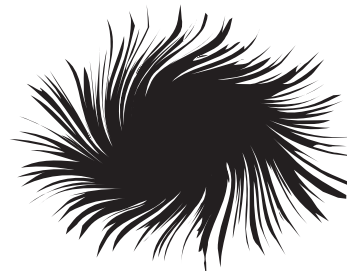
1. Draw an Ellipse



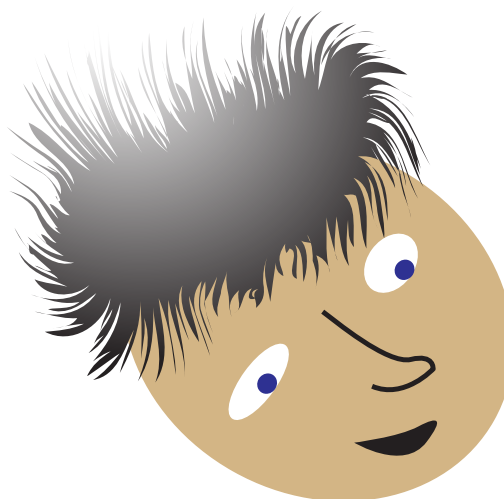
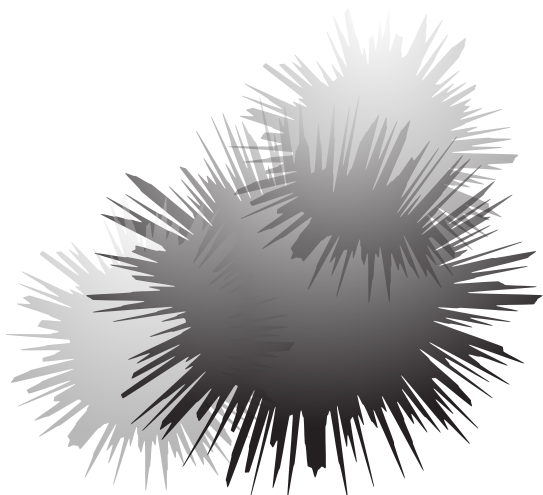
2. Distort > Roughen



3. Expand Appearance



4. Style using Twirl Tool



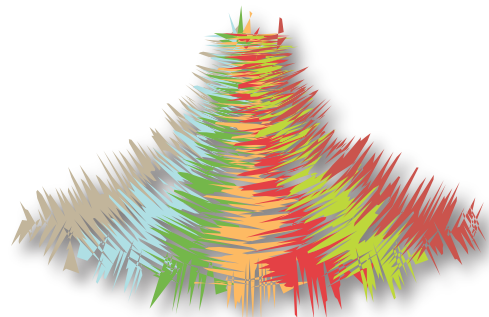
Gradient fills, and various Transparencies overlapped



1. **Draw** colored rectangles, and Group them together (Object Group).



2. **Warp** rectangle Group (Effect > Warp > Squeeze)



3. **Roughen** rectangle Group (Effect > Distort & Transform > Roughen).

4. Add a **Drop Shadow:** (Effect > Stylize > Drop Shadow).

Mini-Skills: *Hair & Fur*

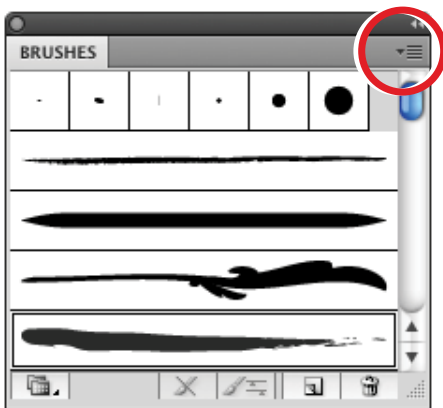
1. Draw a basic curve with the Pen.

Fill: none

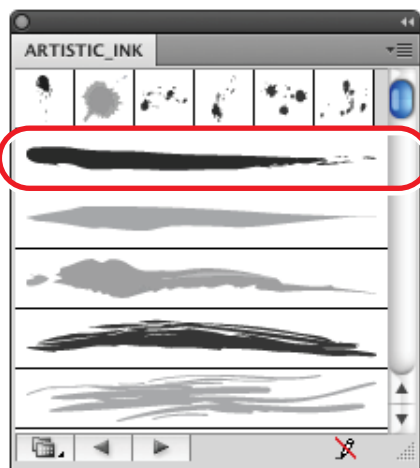
Stroke: brown



2. Open the **Brushes** panel (Window > Brushes), and in the U.R. corner of the Brushes panel choose: Open Brush Library > Artistic > Artistic Ink.



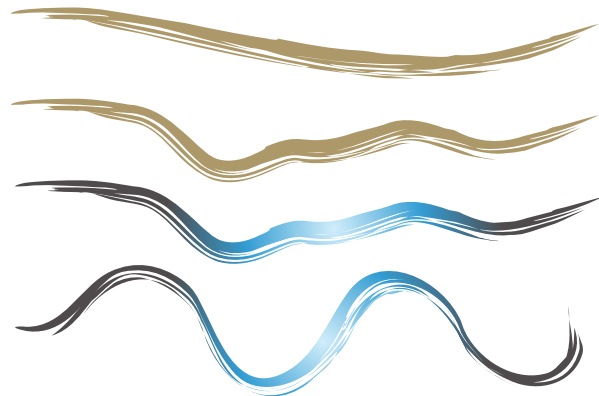
3. Select your curve, and click on one of the Artistic Ink brushes in the list.



4. Your curve is now a strand of hair/fur — and can be re-shaped by curving the line segment. Hair **thickness** can be controlled by changing the **Stroke width**.



5. Try other Ink or Chalk brushes, and also experiment with the **Warp** and **Twirl** tools to re-shape the brushstrokes. Strokes can be filled with a **gradient**, but first they must be **Expanded** (Object > Expand Appearance).



6. Individual brushstrokes can be varied in their colors, and then grouped together (Object > Group). After creating a Group, select the Group and drag it to the **Symbols** panel (Window > Symbols) to make a "library" of hair/fur.

