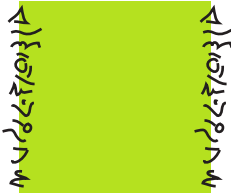


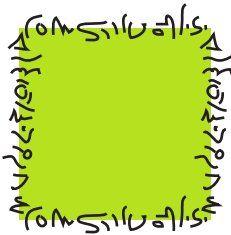
Seamless Patterns: Digital Illustration



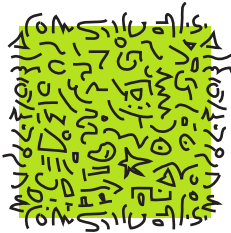
Draw a 1-inch square, and fill it with a solid color (and no stroke). Using the brush, draw designs along the left edge that overlap inside & outside the square.



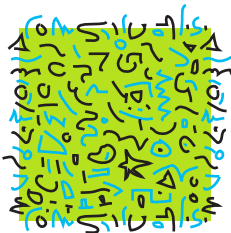
Select all the designs you drew, and choose Object > Transform > Move... (Horizontal = 1 inch, Vertical = 0 inch) as a COPY. Now the left and right edges of your pattern will match.



Repeat the same method by drawing with the brush on the top edge of the square, and moving a COPY 1 inch down to the bottom edge of the square. Now the top and bottom edges of your pattern will match.



Finish the pattern by drawing designs to fill the inside of the square. You can also change the stroke color of the brush to add other colors to your pattern.



Next, select *only* the square, COPY it, choose Paste in Back, and with the copy still selected, choose a Fill of NONE. This bottom square will define the pattern. Marquee-select all the squares & designs, and choose: Edit > Define Pattern.



Here's the finished pattern, filling a new square shape. The new pattern will tile seamlessly when filling any shape.

Sample Patterns

